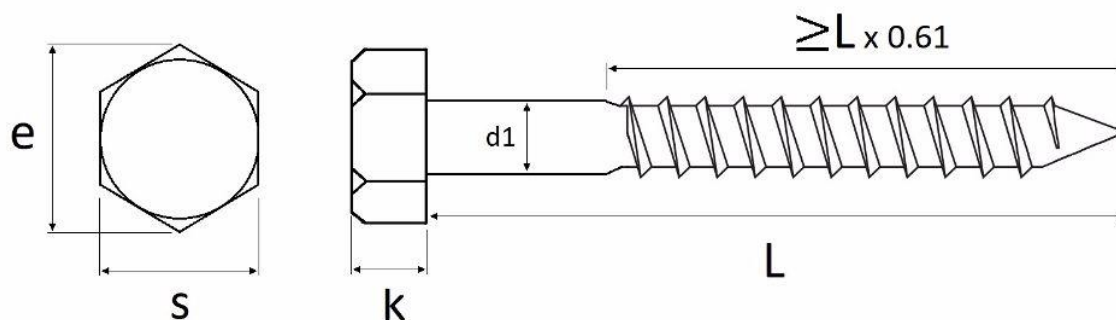




DIN 571 Hexagon Head Coach Screws (Lag Screws / Lag Bolts)



www.tcfixings.co.uk/coach-screws

tel: 01799 520640

This PDF is subject to copyright by TC Fixings Ltd

Coach Screws / Lag Screws DIN 571 Specifications							
All sizes listed below are in millimetres (mm)							
d1	Nominal diameter	M6	M8	M10	M12	M16	M20
	Max	6.0mm	8.0mm	10.0mm	12.0mm	16.0mm	20.0mm
	Min	5.52mm	7.42mm	9.42mm	11.3mm	15.3mm	19.3mm
k	Nominal size	4.0mm	5.5mm	7.0mm	8.0mm	10.0mm	13.0mm
	Max	4.38mm	5.88mm	7.45mm	8.45mm	10.45mm	13.9mm
	Min	3.63mm	5.13mm	6.55mm	7.55mm	9.55mm	12.1mm
s	Max	10.0mm	13.0mm	17.0mm	19.0mm	24.0mm	30.0mm
	Min	10.0mm	13.0mm	17.0mm	19.0mm	24.0mm	30.0mm
e	Min	10.89mm	14.2mm	18.72mm	20.88mm	26.17mm	32.95mm

We stock DIN 571 coach screws in diameters from M6 to M20, and lengths from 25mm up to 300mm. Our range consists of zinc plated and galvanised mild steel, as well as A2 (304) and A4 (316) stainless steel.