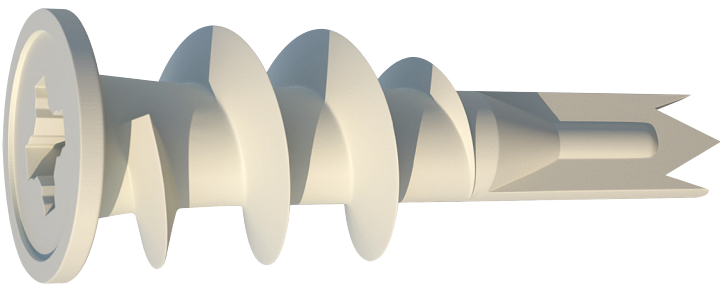
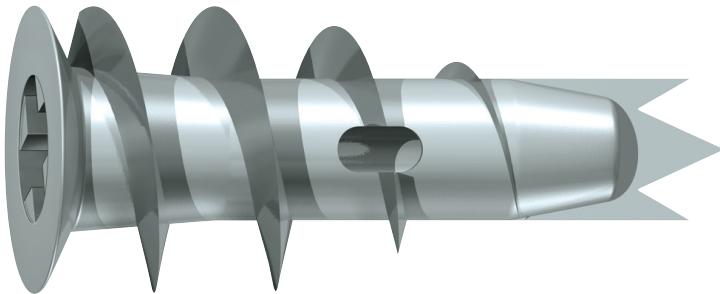


TECHNICAL INFORMATION FOR

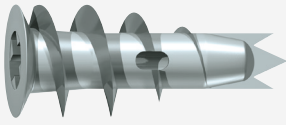
METAL & NYLON SPEED PLUGS



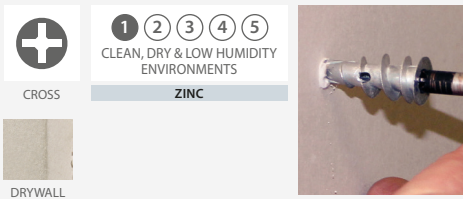
TECHNICAL DATA SHEET



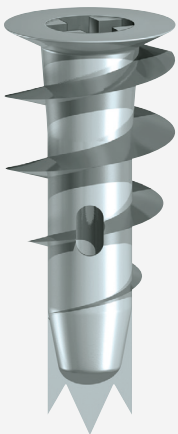
METAL SPEED PLUGS



- A rapid light duty plasterboard fixing for use in a wide range of applications.
- Cross-recess head, allows simple installation with a screw driver. Metal plugs come with screws.



FEATURES



- A rapid light duty plasterboard fixing for use in a wide range of applications.
- Cross-recess head, allows simple installation with a screw driver.
- 3 point tip for quick insertion.
- Metal plugs come with screws.

TECHNICAL DATA



Substrate	Plasterboard 12.5mm Thickness
Type	Metal
Rec. Tensile Load (kN)	0.09
Max Rec. Load (kg)	9

PRODUCT RANGE

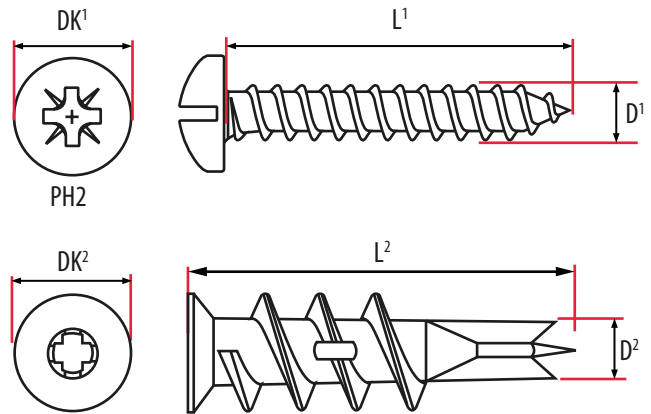
ZINC

Product Code	Plug Length (mm)	Screw Ø x L (mm)	MFT (mm)	Box Qty	Carton Qty (Box)	Carton Qty	Pallet Qty (Box)	Pallet Qty
TBAZS	31.5	4.5 x 30	6	100	20	2,000	640	640,000

DIMENSIONS

Product Code	Screw Head Diameter DK ¹ (mm)	Screw Length L ¹ (mm)	Screw Diameter D ¹ (mm)	Head Diameter DK ² (mm)	Anchor Length L ² (mm)	Point Diameter D ² (mm)
TBAZS	8.8	30.0	4.5	13.0	31.5	6.0

*all figures stated are approximate and for reference only.



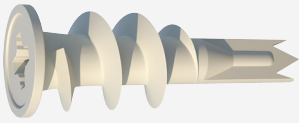
DK ¹	Screw Head Diameter	DK ²	Plug Head Diameter
L ¹	Screw Length	L ²	Anchor Length
D ¹	Screw Diameter	D ²	Point Diameter

INSTALLATION GUIDELINES

- Drive the speed plug into the plasterboard wall.
- INSERT SCREW THROUGH FIXTURE AND INTO METAL PLUG. Tighten SCREW Until secure.



NYLON SPEED PLUGS



- A rapid light duty plasterboard fixing for use in a wide range of applications.
- Cross-recess head, allows simple installation with a screw driver.

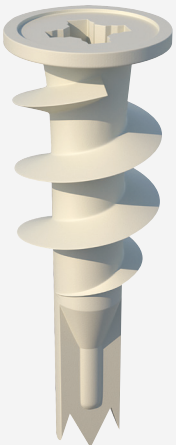


CROSS



DRYWALL

FEATURES



- A rapid light duty plasterboard fixing for use in a wide range of applications.
- Cross-recess head, allows simple installation with a screw driver.
- Ideal for electrical installation due to non-conductivity of nylon material.
- *A pre-drilled 6mm hole may be required for denser plasterboards.

PRODUCT RANGE

Product Code	Plug Length (mm)	Box Qty	Carton Qty (Box)	Carton Qty	Pallet Qty (Box)	Pallet Qty
TBAN	42	100	10	1,000	3,000	30,000

TECHNICAL DATA

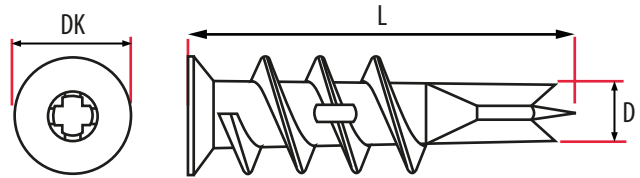


Substrate	Plasterboard 12.5mm Thickness
Type	Plastic
Rec. Tensile Load (kN)	0.04
Max Rec. Load (kg)	4

DIMENSIONS

Product Code	Head Diameter DK (mm)	Anchor Length L (mm)	Point Diameter D (mm)
TBAN	13.0	42	6.0

*all figures stated are approximate and for reference only.



DK	Head Diameter
L	Length
D	Point Diameter

ULTIMATE PULL-OUT VALUES

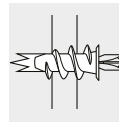
Tested into 12.5mm Gypsum Plasterboard

Major Diameter	27.0	35.0
2.85	0.00 kN	0.00 kN
3.44	0.00 kN	0.00 kN
4.16	0.00 kN	0.00 kN
4.73	0.00 kN	0.00 kN

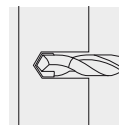
Tested into 15mm Gypsum Denseboard

Major Diameter	27.0	35.0
2.85	0.00 kN	0.00 kN
3.44	0.00 kN	0.00 kN
4.16	0.00 kN	0.00 kN
4.73	0.00 kN	0.00 kN

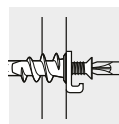
INSTALLATION GUIDELINES



Drive the speed plug into the plasterboard wall.



*A pre-drilled 6mm hole may be required for denser plasterboards.



INSERT SCREW THROUGH FIXTURE AND INTO METAL PLUG. Tighten SCREW Until secure.